

FOR  
WEALTH  
ADVISORS

ESG  
DATA



## 1. Why should I use the app?

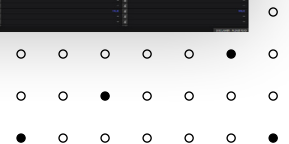
The ESG view within a company profile in LSEG Workspace provides end users detailed analysis of a company's ESG performance. The ESG views contain information on over 12,500 public and private companies covering more than 630 different ESG data points in 10 categories along the three pillars of environmental, social and governance. End users have a full range of access from as reported company data points to summary scores. Additionally, the ESG app's Peer View offers an easy way to compare a company's relative ESG performance by sector, geographic region and market capitalisation.

The screenshot displays the ESG view for L'Oréal SA in LSEG Workspace. The interface includes a sidebar with navigation options like 'Standardised', 'As Reported', and 'Peer View'. The main area shows a table of ESG data points, with columns for different categories and rows for specific metrics. The table is color-coded with green and yellow bars, indicating performance levels. The data is organized into sections such as 'Environment', 'Social', and 'Governance'.

### Key features

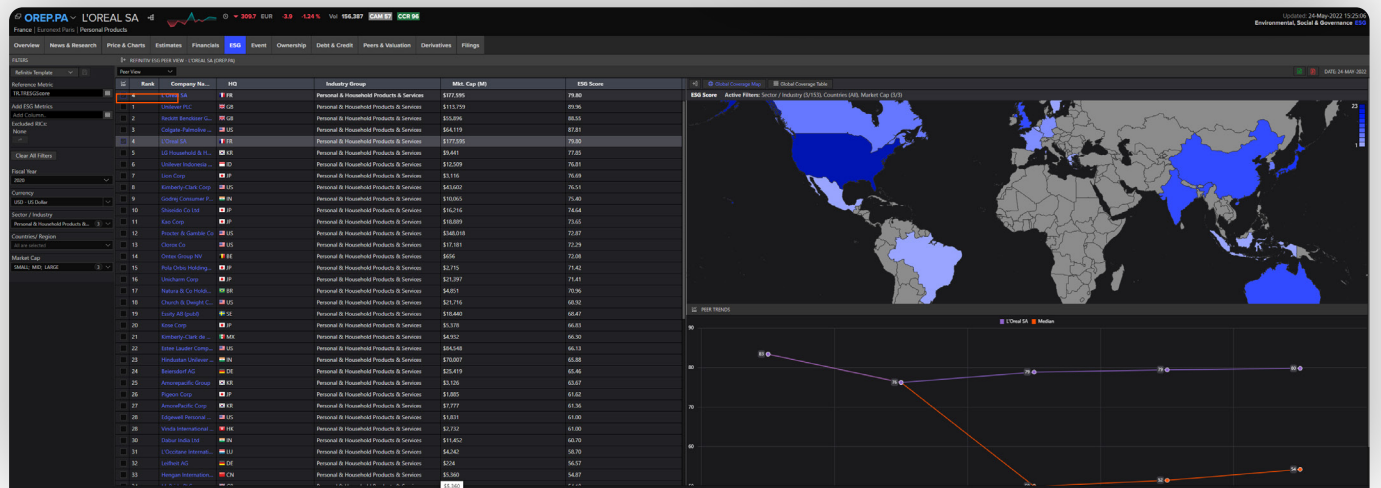
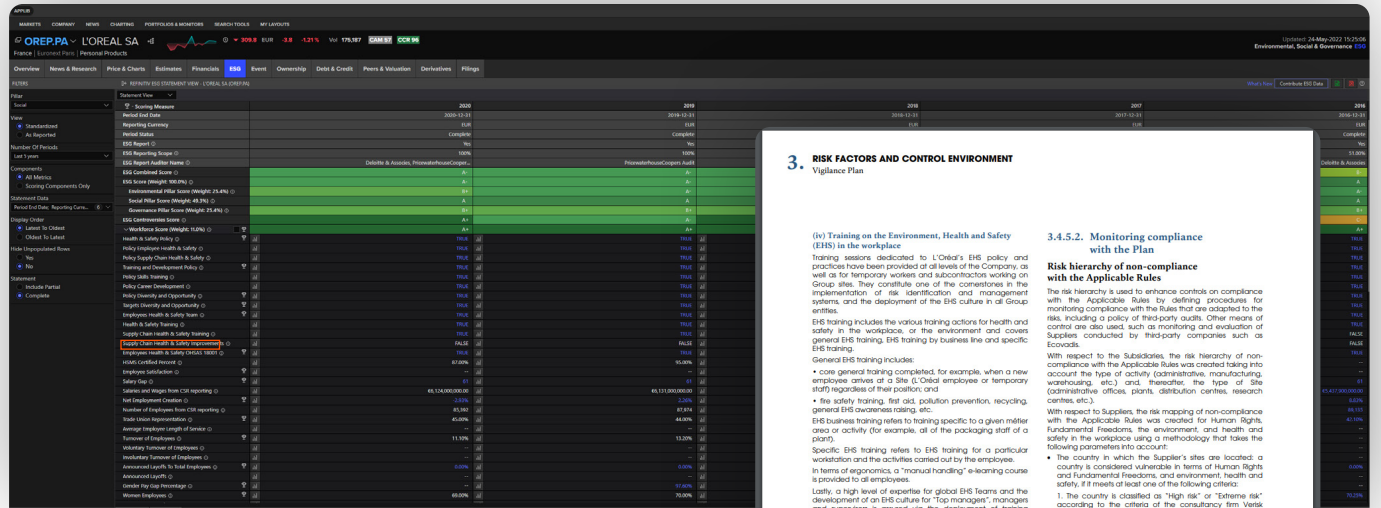
- Ability to toggle between a number of sustainability views including 'Peer View'
- Dedicated tabs for environment, social, governance and ESG-related controversies
- Identify ESG scoring components toggle between 'Standardised' and 'As Reported' data
- New – link for corporate users to directly contribute their own ESG data
- Export in Microsoft® Excel® or PDF

The two screenshots show different views of the ESG data for L'Oréal SA. The top screenshot shows a detailed view of the 'Environment' category, with a table of metrics and a sidebar of navigation options. The bottom screenshot shows a similar view for the 'Social' category, with a table of metrics and a sidebar of navigation options. Both screenshots show the same data points as the first screenshot, but with different visualizations and filters.



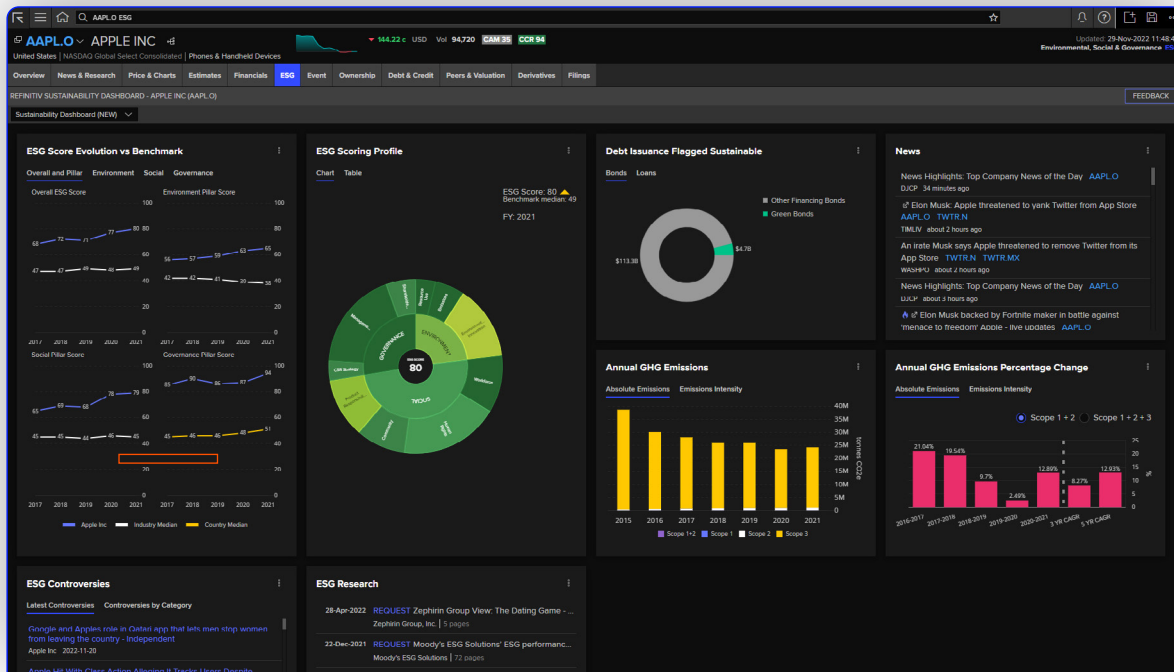
## 2. Key facts

- The app offers coverage on over 12,500 public and private companies, including constituents of most major indices globally
- It contains more than 630 data points with history going back to 2002
- ESG data is fully transparent and auditable to source document via click-through audit
- ESG Peer View gives end users custom screening capabilities based on ESG criteria
- ESG scoring methodology is fully transparent, with dynamic custom category weightings for different industry groups



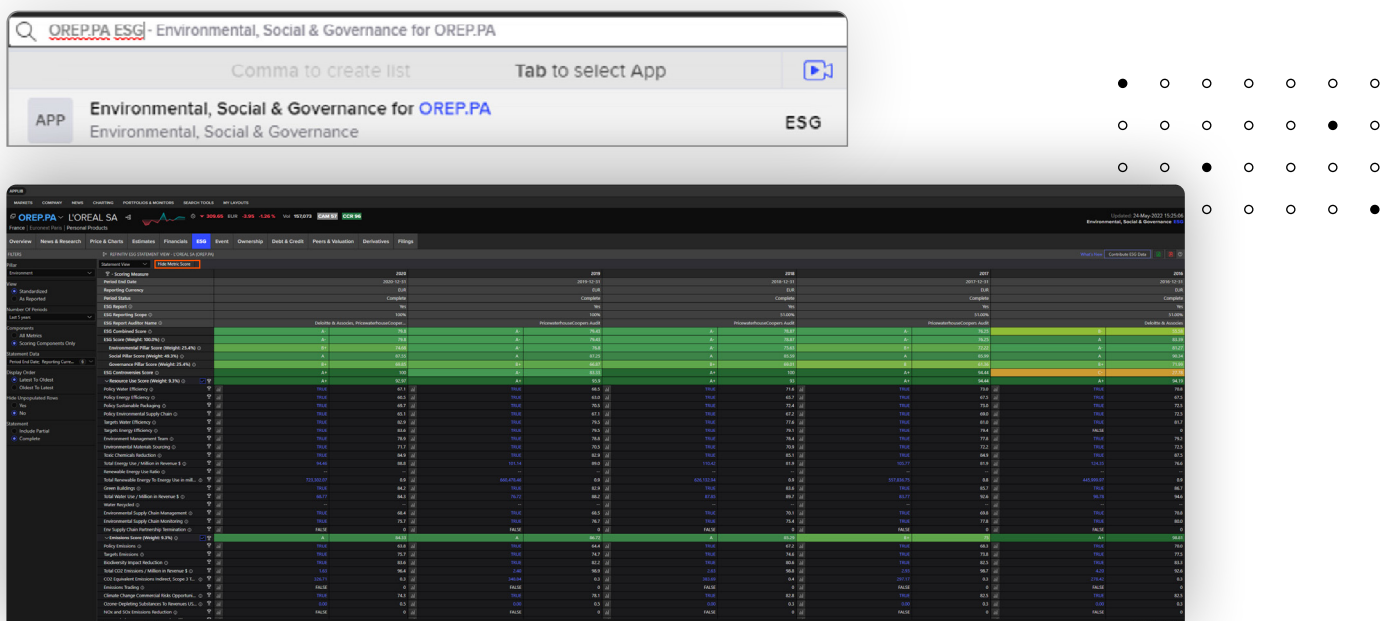
### 3. Sustainability dashboard

The sustainability dashboard allows you to access all the sustainability information you need about a company in one place including ESG scores, debt issuance, green house gas emissions, ESG controversies, news and research.



#### 4. Top tips on how to use the app

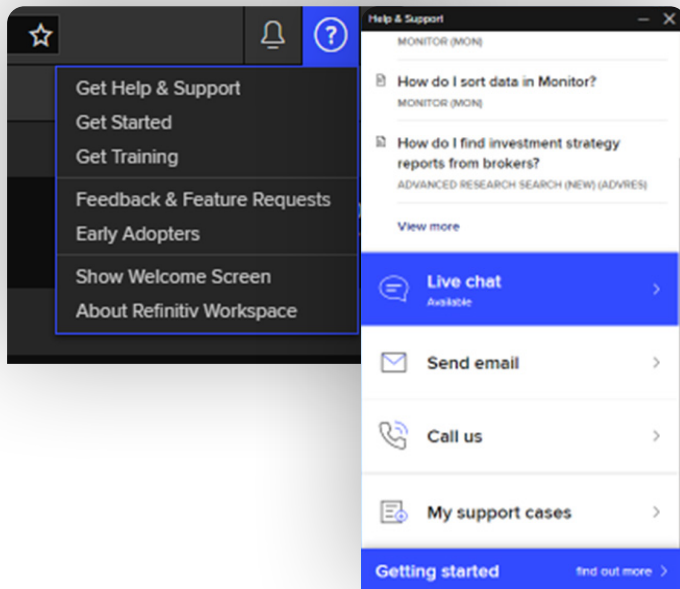
- To access the app, type in company RIC, then **ESG** (i.e., **GM ESG**) in the Workspace Search Box
- There is a dedicated ESG reference page in Workspace, including a list of useful apps, methodology documents and other helpful information. Type **ESG** in the Search Box
- There are more than 630 total metrics in the ESG app. A subset of between 71 and 157 of the metrics (industry dependent) are scoring components. They are identifiable by the trophy icon next to them on Statement View



## 5. Need help?

You can contact us directly through your access to Workspace for Wealth Advisors.

Click on the question mark icon (top right) and submit your question via Get Support.



Access our blended learning [here](#) on our training site.

[Visit the Workspace for Wealth Advisors page](#)

