

Thomson ONE Wealth

Charts Advanced

Charts Advanced makes it easy to create, modify, and customize charts to view and analyze data.

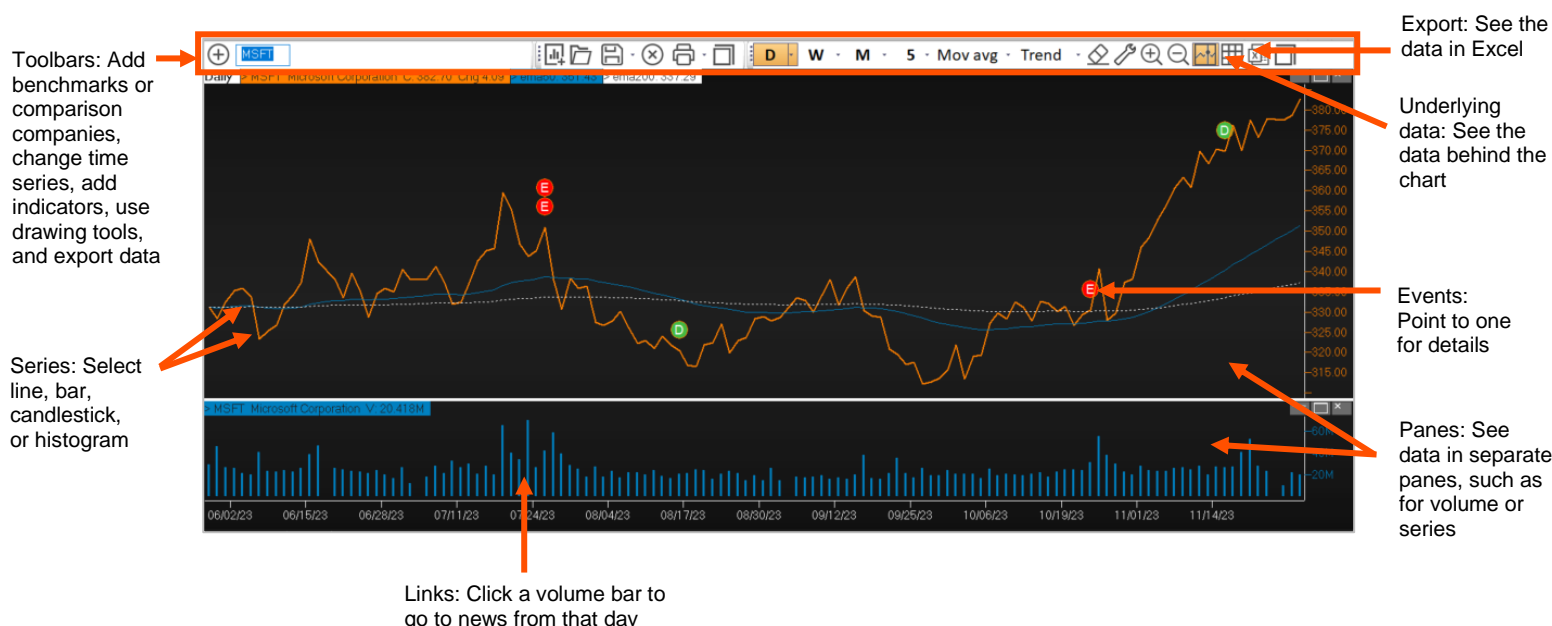
You can use charts to make informed decisions by finding patterns, monitoring progress, making comparisons, and performing technical analysis.

You can view pre-loaded charts, such as those that compare a company to benchmarks or those that show company events as they affect prices and volume over time, or you can create your own charts and add moving averages, trendlines, or other indicators. You can further customize charts with a different time series or drawing tools. Additionally, you can look at the underlying chart data or export it to Excel.

Whether you want to view a simple price chart, create comparison charts, or perform advanced technical analysis, Charts Advanced offers a wide variety of --

- Indicators, including technical, fundamental, sentiment, and your own custom indicators
- Text boxes and drawing tools to add words, shapes, or lines to help you make comments and identify trends
- Events, including stock splits, dividends, earnings, significant developments, and insider trades

Descriptions of the indicators, drawing tools, and events are available in the help. To access the help, go to Charts Advanced and press F1.



Indicators

| Indicator | Description |
|-------------|--|
| Technical | A technical indicator uses a formula that pulls data from a charted symbol and plots a new series to provide a different perspective on a symbol's price movement. Indicators appear in the same pane as the charted symbol or in a separate pane. |
| Fundamental | Fundamental indicators help you see patterns of fundamental data on a symbol. |
| Sentiment | Sentiment indicators gauge the level of optimism or pessimism toward specific securities. |
| Custom | With custom indicators you can create and save formulas that include multiple functions and symbols. |

Text Boxes and Drawing Tools

| Tool | Description |
|-------------------------|---|
| Text tool (text boxes) | You can type explanatory text or notes anywhere on a chart. The text box expands as you type. |
| Draw shapes | You can add and then adjust the settings for multiple shapes: <ul style="list-style-type: none"> • Rectangles • Round rectangles • Ellipses • Crossed lines |
| Lines | You can add one of these lines to recognize pricing levels and movement: <ul style="list-style-type: none"> • Vertical and horizontal lines • Trendlines • Linear regression channel • Linear regression line |
| Fibonacci drawing tools | These items help you to anticipate and see support and resistance levels and changes in trends: <ul style="list-style-type: none"> • Fibonacci levels • Fibonacci time zones • Fibonacci arc • Fibonacci fan |
| % retracement tool | The percent retracement tool compares a fall in price to a preceding advance, or a rise in price to a preceding decline. |
| Cycle tool | The cycle tool displays adjustable vertical lines at regular intervals to illustrate the cyclical nature of stocks. |
| Gann angles | Gann angles are designed to predict stock movement based on adherence or deviation from a series of specified angles. |

Events

When you are viewing daily, weekly or monthly charts, you can add events and gauge how they might have affected performance and might affect performance in the future.

After you select which events to include, non-price data indicators are plotted on your daily charts to show you when the event occurred. Alternatively, you can display the indicators at the bottom of the pricing pane instead of on top of the price line.

You can add indicators to view the following events:

- Stock splits
- Earnings announcements
- Dividends
- Significant developments – a concise description of crucial, market-moving company news.
- Insider trades

Legend



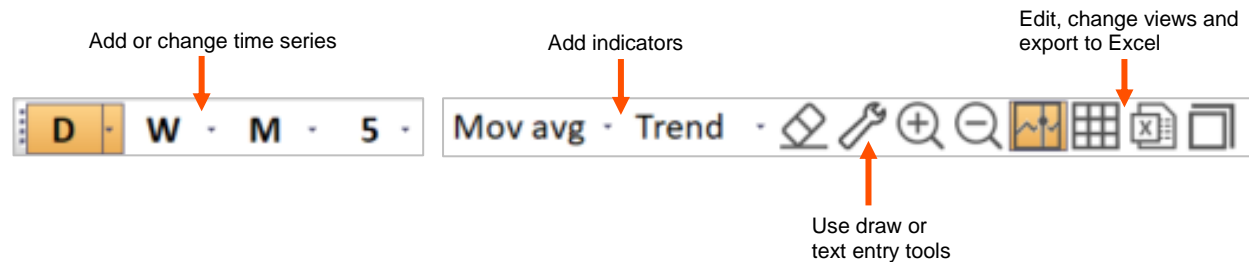
Toolbars

Following are commonly used toolbars in Charts Advanced. The toolbars that you see may differ, based on your default workspace. You can change which toolbars to show or hide.

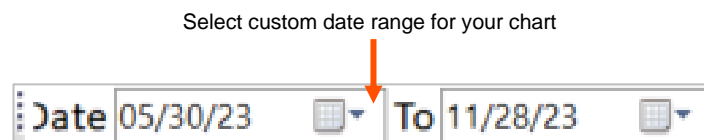
Input and Main Toolbars



Analysis Toolbar



Date Toolbar



Show or Hide Toolbars

- Right-click, point to **View (toolbars)**, and click the toolbars that you want to show/hide.

You can create charts, customize charts, and link to related News and Quotes from a chart.

Create a Chart


What kind of chart do you want to create?

| If you want to... | Create this type of chart | More information |
|--|------------------------------|--|
| Chart only the price and, optionally, volume of one or more symbols over a specified time period | Basic | A basic chart has one or more symbols with no indicators. |
| Create a chart with technical or fundamental indicators | Technical or fundamental | See Indicators. |
| Create a basic chart and later add indicators | Basic | You can add technical or fundamental indicators to a basic chart. |
| Compare performance of two or more trading instruments | Performance or rebased chart | <p>A rebased chart measures percent change instead of price change, allowing you to compare differently priced instruments.</p> <p>Up to six symbols are scaled to a common starting point and diverge or align as their percentage change varies, letting you compare a stock to its group and the overall market. Following are scaling options.</p> |


Rebased Chart Scaling options

| Rebase to | Description |
|------------|--|
| zero | the starting point is zero with positive changes above and negative changes below |
| 100 | the starting point is 100 with increasing changes above and decreasing changes below |
| [0] symbol | the price of the first symbol is used as the source against which the other symbols are compared |


Create a Basic or Performance (Rebased) Chart

1. On the Charts Advanced toolbar, click , and click a type of chart.
2. Type or select criteria in the dialog box that appears, and click **OK**.

Create a Technical or Fundamental Chart

1. On the Charts Advanced toolbar, click , point to **Technical** or **Fundamental**, and click an indicator.
2. Type a symbol, select whether to include volume, and click **OK**.

Open a Saved or Pre-Loaded Chart

1. On the Charts Advanced toolbar, click .
2. Select a .UCH file, and click **Open**.
3. Optionally type a new symbol and/or change the chart to meet your needs.

Change the Chart to Meet Your Needs

Add an Indicator to a Chart

1. Click the indicators drop-down list from the toolbar, and click an indicator. Additional indicators are available in the right-click menu.
2. To see a description of all the indicators in online help, press F1.

Edit or Remove an Indicator

1. Right-click directly on the indicator or the indicator value on the legend.
2. To edit, click **Indicator Settings**, make changes, and click **OK**.
3. To delete, click **Delete**.

Add a Text Box

1. Right-click within a pane but not directly on a series or drawn object, point to **Draw Tools**, and click **Text Tool**.
2. Click in the chart where you want to add the text, and type.
3. When finished, click outside the text box.

Add a Draw Tool

1. Right-click within a pane but not directly on a series or drawn object, point to **Draw Tools**, and click a tool.
2. Click in the chart where you want to add the tool.

View Underlying Data for a Specific Point in a Series

1. Click within a pane but not directly on a series or a drawn object, and drag until a crosshair appears. The DataScan window appears in the lower left corner.
2. Drag the crosshair to a point on the chart to view data.
3. To close the DataScan window, release the mouse.

Display the DataScan Window and Keep it Open

1. Right-click within a pane but not directly on a series or drawn object, and point to DataScan window.
2. Click **Single date view** or **Date range view**.



Access Additional Underlying Chart Data from Within the DataScan Window

1. Right-click within a pane but not directly on a series or drawn object, and point to DataScan window.
2. Click **Single date view**.
3. In the DataScan window, click **Show All**.

Add Events to a Chart

1. Right-click within a pane but not directly on a series or drawn object, and click **Events**.
2. Make selections, and click **OK**.

View Underlying Data of All Values for a Series as a Table

1. On the Charts Advanced toolbar, click .
2. To return to chart view, click .

Export Underlying Chart Data to Excel

- On the Charts Advanced toolbar, click .

Link to Related News and Quotes

The following instructions are for the U.S. default workspace. Location and functionality may differ by region or firm.

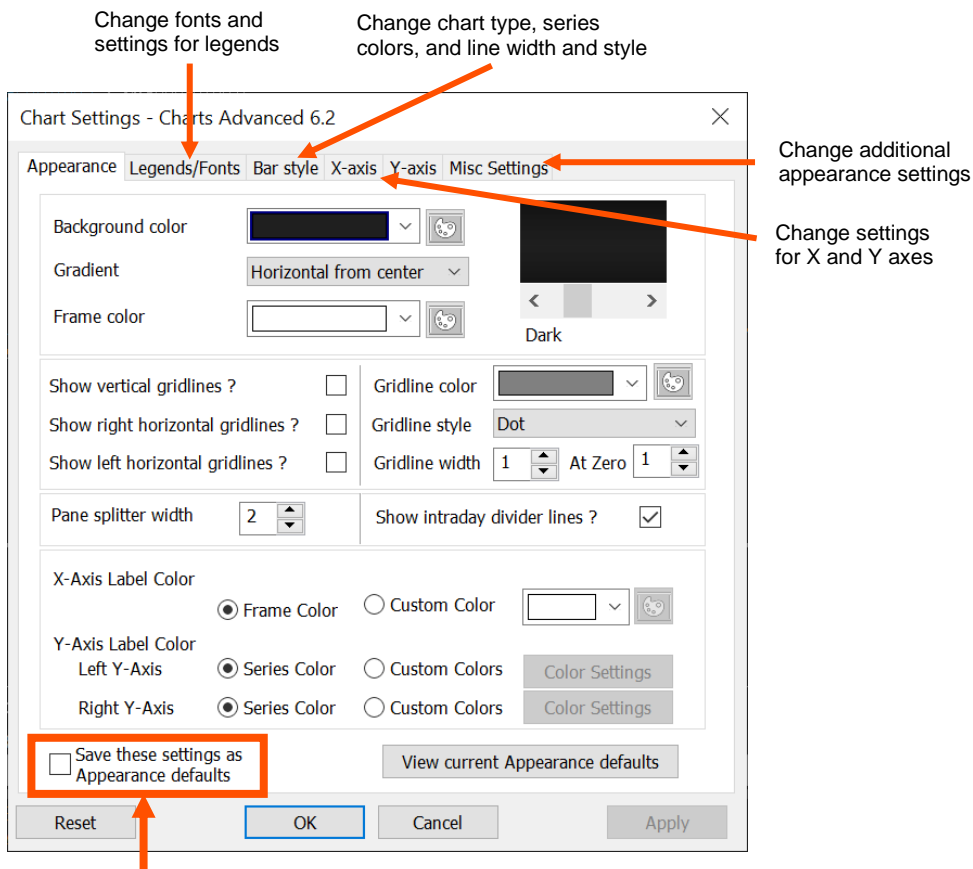
- To view news on the symbol in the chart in **Company > Charts** with a **Volume** pane, double-click a bar above a date in the **Volume** pane.

The News component opens to that symbol and date.

- To see news for that day and a quote on the symbol in a chart in **Company > Charts**, right-click and click **Quote & News**.

Change How the Display Looks and Behaves

- Right-click within a pane but not directly on a series or drawn object, and click **Chart Settings**.



In each tab, you can apply the settings to the current chart only or as a default for future charts

Learn More

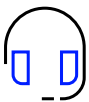


Learn more

[Learning academy](#)

Documents on [My Account](#)

Thomson ONE Desktop – [Quick Reference Card](#)
Thomson ONE Anywhere – [Quick Reference Card](#)
[Commonly used symbols](#) on Thomson ONE
[Exchanges](#) available on Thomson ONE



Contact us

+1 (888) 463 3383

- **Option 1:** Data and Applications
- **Option 2:** Password Resets
- **Option 3:** Technical Support
- **Option 4:** Other Requests

Click [here](#) to:

- Get support
- Track support tickets

London Stock Exchange Group, is one of the world's largest providers of financial markets data and infrastructure. With \$6.25 billion in revenue, over 40,000 customers and 400,000 end users across 190 countries, LSEG is powering participants across the global financial marketplace. We provide information, insights, and technology that enable customers to execute critical investing, trading and risk decisions with confidence. By combining a unique open platform with best-in-class data and expertise, we connect people to choice and opportunity – driving performance, innovation and growth for our customers and partners.



LSEG DATA & ANALYTICS